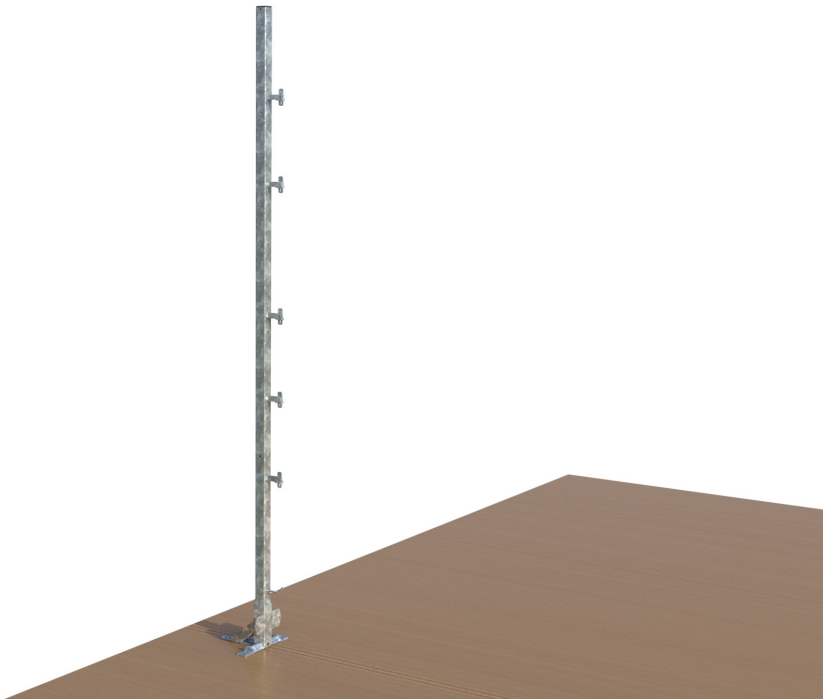




**DUAL PURPOSE STAND  
TRIPLE HEIGHT  
(AU007B)**



**RAPID-Edge Protection Systems Ltd.**

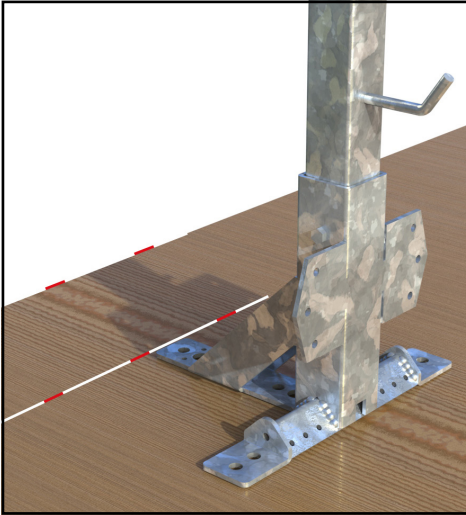
T: 0113 252 8883 | F: 0113 307 4990 | W: [rapideps.com](http://rapideps.com)  
UNIT D TREEFIELD INDUSTRIAL ESTATE, GELDERD ROAD, GILDERSOME, LEEDS, LS27 7JU

**THINK SAFE**

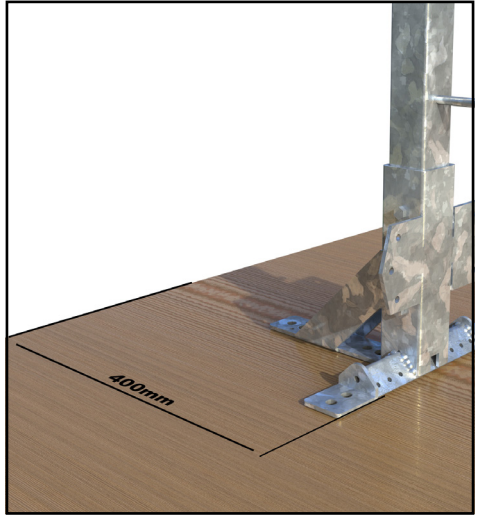
**WORK SAFE**

**HOME SAFE**

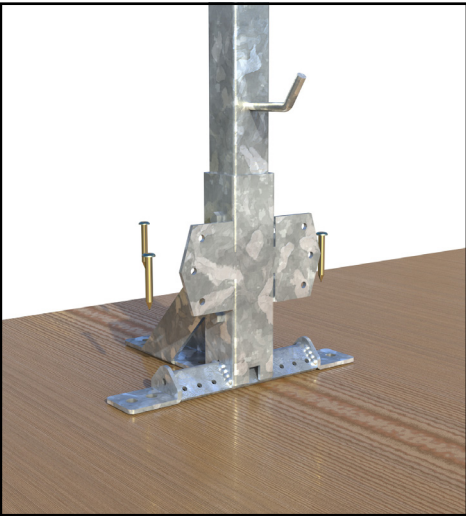
**IMPORTANT:** DISASSEMBLY PROCESS MUST FOLLOW THE INSTRUCTIONS IN REVERSE ORDER. IMPROPER INSTALLATION OR REMOVAL COULD RESULT IN SERIOUS INJURY OR DEATH.



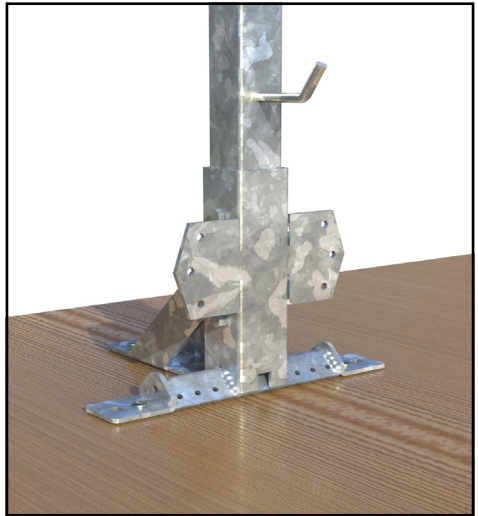
**STEP 1:**  
ALIGN DUAL PURPOSE STAND SO IT IS PARALLEL WITH THE CROSS LAMINATED TIMBER.



**STEP 2:**  
POSITION A MINIMUM 400MM FROM THE EDGE OF THE SURFACE.

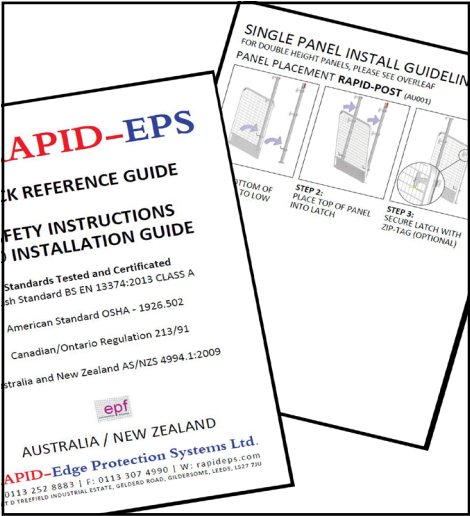


**STEP 3:**  
USE 3 NUMBER M8 X 60MM HECO TOPIX FIXINGS USING THE BACK HOLE AND THE INTERNAL SIDE HOLES CLOSEST TO THE POST.



**STEP 4:**  
FIX SECURELY IN PLACE ENSURING ALL FIXINGS ARE FULLY RECESSED.

**IMPORTANT:** DISASSEMBLY PROCESS MUST FOLLOW THE INSTRUCTIONS IN REVERSE ORDER.  
IMPROPER INSTALLATION OR REMOVAL COULD RESULT IN SERIOUS INJURY OR DEATH.

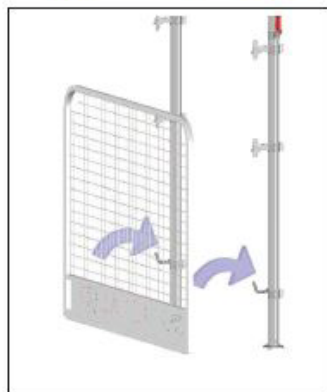


**STEP 5:**  
FOLLOW RAPID EPS INSTALLATION GUIDE  
ON HOW TO INSTALL PANELS ENSURING  
ALL FITTINGS ARE LOCKED IN PLACE.

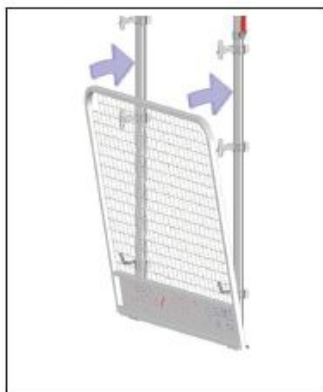
# SINGLE PANEL INSTALL GUIDELINES

FOR DOUBLE HEIGHT PANELS, PLEASE SEE OVERLEAF

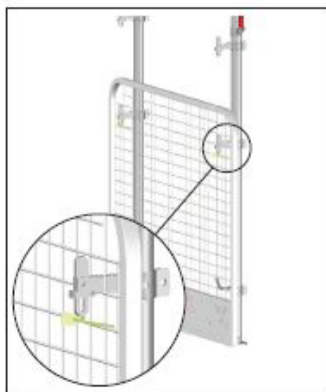
## PANEL PLACEMENT **RAPID-POST** (AU001)



**STEP 1:**  
PLACE BOTTOM OF  
PANEL ON TO LOW  
HOOK



**STEP 2:**  
PLACE TOP OF PANEL  
INTO LATCH



**STEP 3:**  
SECURE LATCH WITH  
ZIP-TAG (OPTIONAL)

# SAFETY INSTRUCTIONS

Always check Rapid-EPS products for signs of damage/wear before installation.

Do NOT use ANY Rapid-EPS products if damaged.

Always follow installation instructions carefully. Do not use in any other way than shown.

Always use personal fall protection equipment during installation.

When storing panels use Rapid-EPS racks and racking to prevent accidental damage.

Rapid-EPS system is designed for construction sites and should not be used to protect the general public.

Erected panels and posts should not be used for supporting construction materials in any way or form.

Rapid-EPS Ltd. products liability only applies to combinations of Rapid-EPS Ltd. products that are assembled according to Rapid-EPS instructions.

If the Rapid-EPS edge protection is subject to a high load e.g. after a fall, a qualified person must inspect the relative Rapid Panels and Posts before being used again. In case of any uncertainty, contact Rapid-EPS Ltd.

**Safety and Installation Instructions for RAPID-EPS Conforms to  
AUSTRALIA & NEW ZEALAND AS/BZ 4994.1 2009**

## **IMPORTANT**

The customer shall not use, connect, mix or match the equipment with similar equipment not provided by Rapid-EPS to the customer, and the customer specifically acknowledges that Rapid-EPS has advised the customer that the equipment is not designed to be connected to, mixed or matched with similar equipment that is not provided to the customer by Rapid-EPS.

**ALWAYS USE PERSONAL FALL PROTECTION EQUIPMENT  
AUSTRALIA & NEW ZEALAND AS/NZ 4994.1 2009.**

**DISASSEMBLY PROCESS MUST FOLLOW THE INSTRUCTIONS IN  
REVERSE ORDER. IMPROPER INSTALLATION OR REMOVAL COULD  
RESULT IN SERIOUS INJURY OR DEATH.**

# **GENERAL NOTE RELATING TO ALL COMPONENTS**

**CHECK ALL COMPONENTS FOR EVIDENCE OF IMPACT  
(DISTORTED/DENTED COMPONENTS)**

**CHECK THAT EQUIPMENT IS SUITABLE FOR PURPOSE  
AND VISUALLY ACCEPTABLE (FREE FROM SITE RESIDUE)**

**RAPID–Edge Protection Systems Ltd.**

T: 0113 252 8883 | F: 0113 307 4990 | W: [rapideps.com](http://rapideps.com)  
UNIT D TREEFIELD INDUSTRIAL ESTATE, GELDERD ROAD, GILDERSOME, LEEDS, LS27 7JU

**THINK SAFE**

**WORK SAFE**

**HOME SAFE**

## NOTES

This image shows a full page of blank, lined paper. It features approximately 28 evenly spaced horizontal blue or grey lines across its entire width. The lines are uniform in thickness and spacing, providing a template for handwriting practice or general note-taking. There are no margins, text, or other markings present on the page.

**THINK**  
**WORK**  
**HOME** **SAFE**